

Trying to Balance the Madness

"It's not what the world holds for you. It's what you bring to it." — L. M. Montgomery

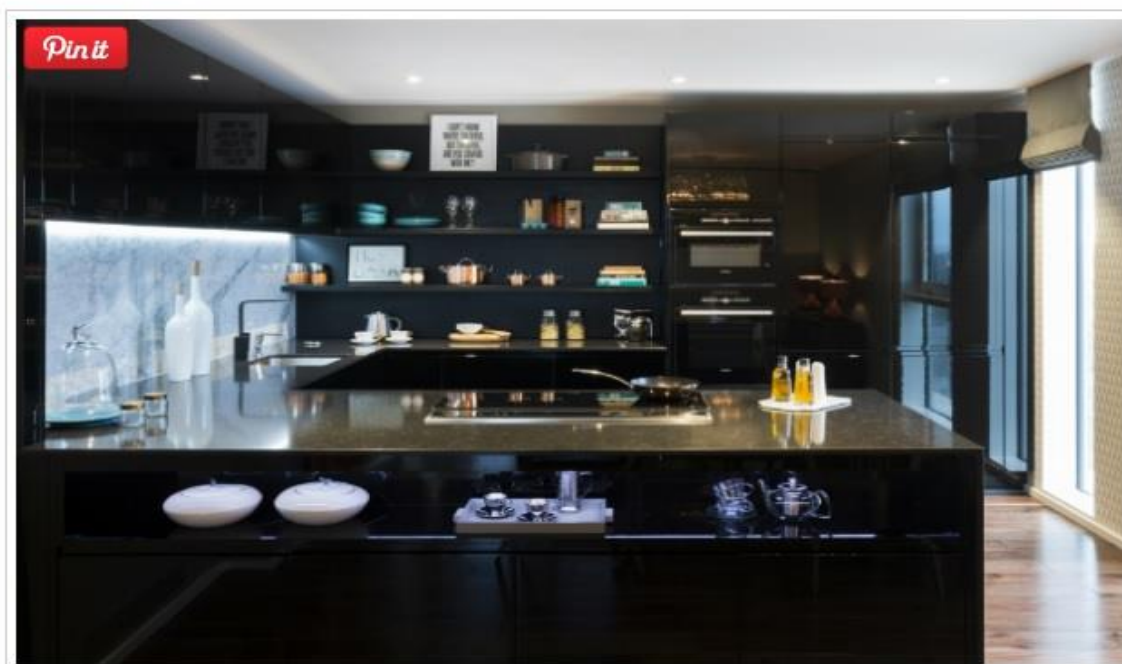
The Penthouse Collection at The Filaments By Suna Interior Design

Andrea Morgan / 4 days ago



Regular followers of Trying to Balance the Madness will know of my admiration for the work by [Suna Interior Design](#). They recently allowed me to see images of one of their latest projects – The Penthouse Collection at the Filaments and I just had to share it with you. The wonderful Rebecca Tucker who is co-director of the company described the project as "An upmarket design with personality, high-end finishes, [bespoke](#) touches and original artwork."

"This was an ideal project for Suna Interior Design" said Rebecca "we worked on the specification as well as the interior design which is quite moody and masculine with rich tones of gloss black [kitchen](#) cabinetry, walnut flooring and a marble splash-back in the elegant kitchen. We then took this design to the next level by adding tones of leather and copper to enrich the palette."



The bespoke kitchen, designed by Suna Interior Design with black Siemens built-in appliances and features such as a Quooker, marble effect quartz worktops, a black wood-grain effect open dresser unit and concealed under-cabinet lighting – creating a striking combination.

As much as I love neutral palettes I am a fan of colour, especially the use of rich tones. Suna Interior Design choose captivating scheme silver, greys and coppers shimmer alongside a monochrome palette which is not too over co-ordinated. Vibrancy has been added to the design through splashes of turquoise, orange, emerald green and navy.



The second bedroom featuring a bespoke punch-button, tall headboard and tripod table lights, framed by floor-to-ceiling windows.



The third bedroom featuring a long, low, wide headboard in a black and white hounds-tooth fabric behind walnut and black bedside tables.

Their brief also requested that they include original works of art. To this end the [living room](#) is furnished with a leather Paulistano chair, a Map Dress Artwork by Jennifer Collier and one of Jayoon Choi's Jealous Gallery. An eclectic combination comprising warm tones of copper coupled with captivating Skandi wallpaper. The warmth of the room is captured further by the use of luxe, velvety scatter cushions by House of Hackney on the bespoke sofa, the vivacious orange of the ornate mirror on the opposite wall and of course the bespoke double-sided fireplace that stylishly warms both the living and dining rooms.



Leather hanging shelves create a feature wall in the corner of the room, while the original works of art hang behind the sofa. The room is stylishly furnished; the round, walnut coffee table, the Paulistano chair, the Twiggy-style floor lamp, the bespoke Milan-style corner sofa and the handmade wool rug.



Warm and inviting – a well-dressed room, subtly created through texture, colour palette, well selected furniture and bespoke works of art.

There is a touch of drama within their design from murals in the masterbedroom and study.



The master en-suite bedroom with a feature punch-button, curved headboard and bespoke tulip wallpaper.



A room you're drawn to work in: the vintage metal desk and the Vitra Eames Dar chair stylishly overlooked by Russian Tsar Nicholas II create a unique and fascinating work environment.

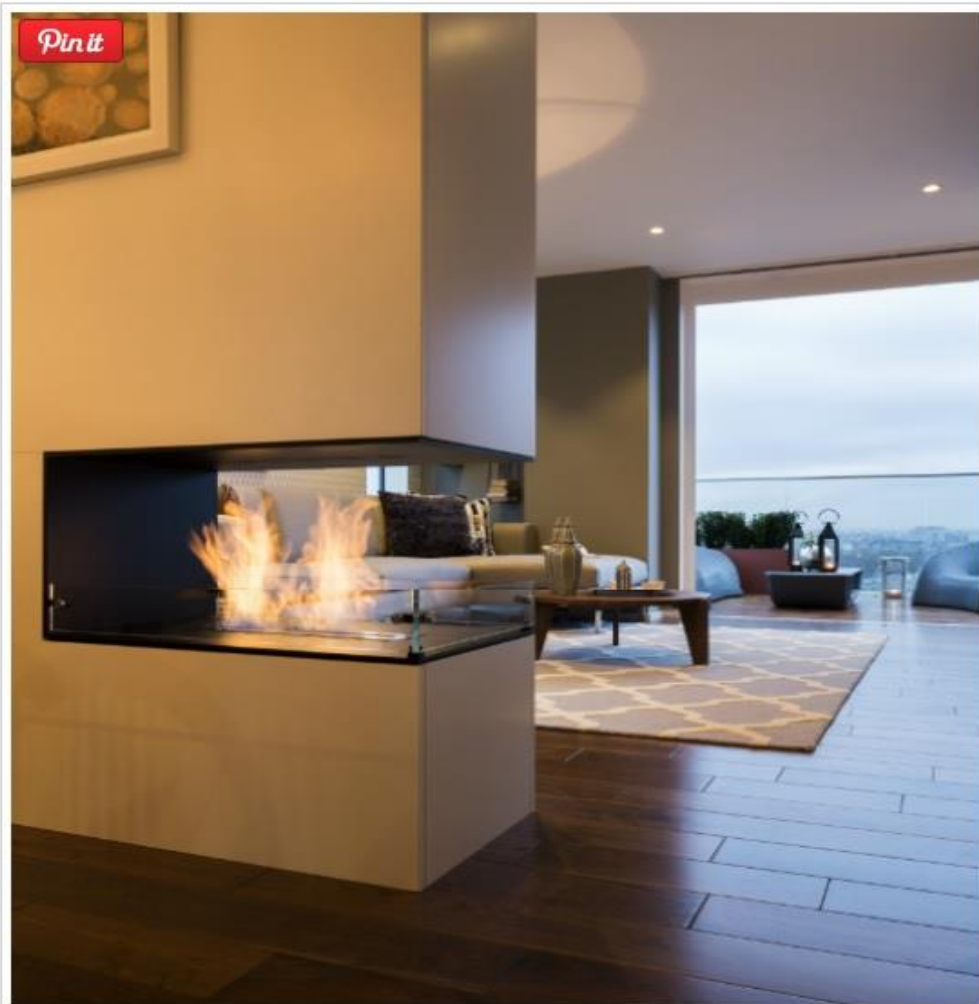
So which is Rebecca's favourite elements within the design? "The specification in the bathrooms, kitchen and the fireplace wall design, as well as the wallpaper mural in the study. It was an amazing apartment to work in, spacious, beautiful views, and full height glazing (double height in the hall!)"



The stylish Alape washstand with Crosswater design basin spout.



The matt black tap and Quooker with the marble effect stone splash-back.

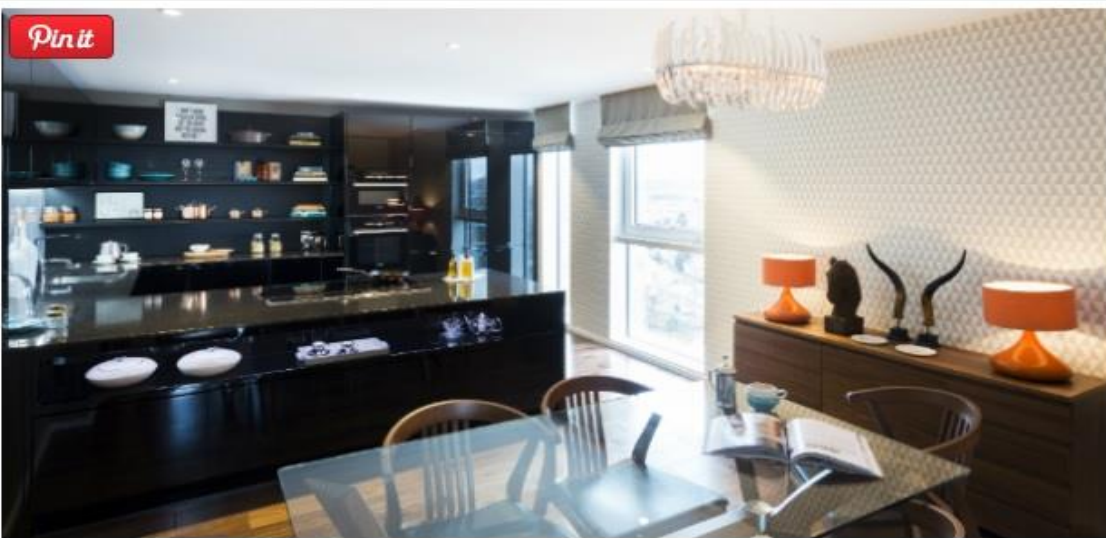


The feature, bespoke double-sided fireplace.

My favourite element is the [open plan](#) space and how the differences in colours and textures has defined each zone within the room.



The stylish living space with seamless flow from one room to another.



The stylish dining area with the kitchen in the background. The dining area features a glass table with walnut dining chairs and sideboard. Echoing the vibrant orange from the ornate mirror hanging on the opposite wall, are two retro orange ceramic lamps. Above the dining table hangs a contemporary glass chandelier.

Thank you [Suna Interior Design](#)