



Tuesday, 29th April 2014

The Penthouse Collection at The Filaments

“An upmarket design with personality, high-end finishes, bespoke touches and original artwork.” This is what Suna Interior Design has created for The Penthouse Collection at The Filaments says interior designer and co-director, Rebecca Tucker, commenting on the brief given for the design.

Rebecca said:

“This was an ideal project for Suna Interior Design. we worked on the specification as well as the interior design which is quite moody and masculine with rich tones of gloss black kitchen cabinetry, walnut flooring and a marble splash-back in the elegant kitchen. We then took this design to the next level by adding tones of leather and copper to enrich the palette.”

Throughout this captivating scheme silver, greys and coppers shimmer alongside a monochrome palette which is not too over co-ordinated. Vibrancy has been added to the design through splashes of turquoise, orange, emerald green and navy.

The brief was to include original works of art. To this end the living room is furnished with a leather Paulistano chair, a Map Dress Artwork by Jennifer Collier and one of Jayoon Choi’s Jealous Gallery. An eclectic combination comprising warm tones of copper coupled with captivating Skandi wallpaper. The warmth of the room is captured further by the use of luxe, velvety scatter cushions by House of Hackney on the bespoke sofa, the vivacious orange of the ornate mirror on the opposite wall and of course the bespoke double-sided fireplace that stylishly warms both the living and dining rooms.

This spacious apartment lends itself to the dynamic colour palette of coppers and moody greys with added navy’s, greens.

Rebecca said:

“The ability to create a visual impact within the apartment is one of the aspects that has facilitated such an outstanding design. For example the large print wallpaper murals are eye catching and enact maximum impact.”

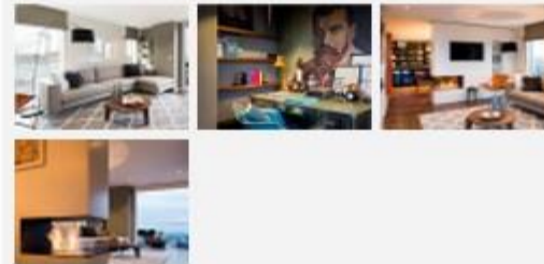
Rebecca’s favourite elements of the design are “the specification in the bathrooms, kitchen and the fireplace wall design, as well as the wallpaper mural in the study. It was an amazing apartment to work in, spacious, beautiful views, and full height glazing (double height in the hall)”

Commenting on this elegant, contemporary and eclectic show home Rebecca said:

“I love the richness of the end result, punctuated with random colour splashes so that it feels less show home and more like an actual city home occupied by a discerning and trendy resident.”



The stylish living space with seamless flow from one room to another.



Article submitted by

Suna Interior Design