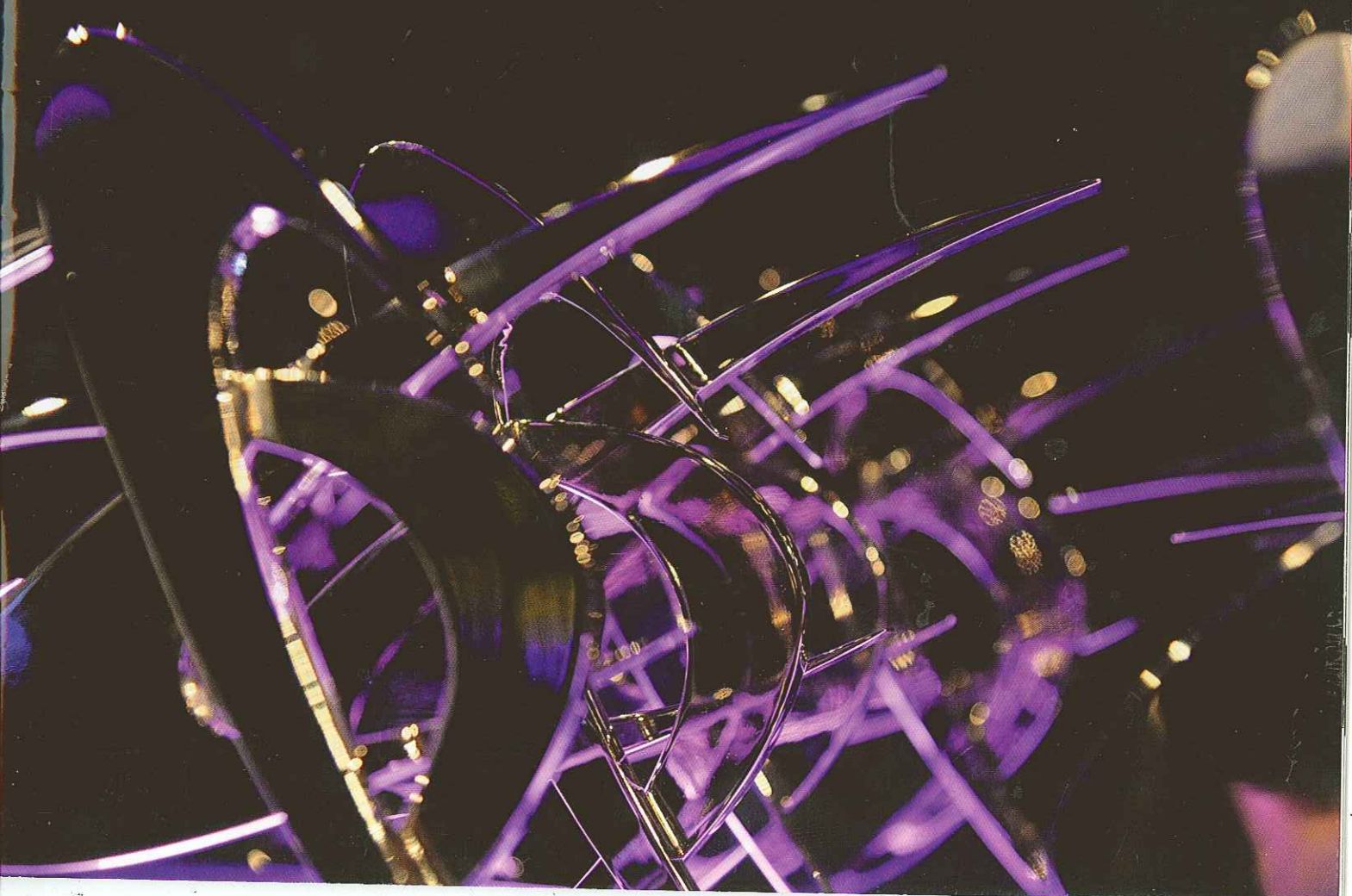

KBBREVIEW
AWARDS
WINNERS
BROCHURE 2012



BATHROOM CONTRACT DESIGNER OF THE YEAR

Judges are looking for how well designers managed to provide the contractor, developer or house builder with a kitchen that would help them sell their project while keeping costs low and 'wow' factor high.

WINNER: HELEN FEWSTER & REBECCA TUCKER - SUNA INTERIOR DESIGN

PROJECT COST: £3,500
PRICE IS SUPPLY ONLY

The brief:

Suna was commissioned by developer Mount Anvil to design the full interior specification for its Central Square development - a 170 apartment complex situated in the heart of central London. The project's location meant that the anticipated purchaser was a considered and discerning professional, who would have an expectation of quality and high level of design - which is fine, but Helen and Rebecca had to achieve that brief with a supply only budget for each bathroom of just £3,500 including tiling.

What Helen and Rebecca say:

"The basin was a completely bespoke design in Corian with an off-centre oval bowl and surface mounted tap with the controls fixed to the front face of the slab."

Pictured (l-r): Host Rory Bremner, Helen Fewster, SBID President Vanessa Brady and Rebecca Tucker



FINALISTS

Simon Holbrook,
Millgate Homes



Project cost: £14,095 inc installation and building work
Simon's brief was to keep costs low and 'wow factor' high. He more than succeeded with a modest budget that included all the products, installation, tiling, flooring and building work.

Kirsten Wain,
Ripples Canterbury



Project cost: £17,030 does not include installation
Kirsten needed to contend with lots of sloping ceilings and narrow spaces on this project so she introduced bespoke elements such as mirrors and lighting to make the most of the rooms. In all she managed to do four bathrooms for the price.

Kimberly Finch,
Ripples Chelmsford



Project cost: £14,801 inc VAT but not installation
Kimberley's client was overseeing the refurbishment of a derelict rectory. They wanted a bathroom with a luxurious, classic feel and requested a large bath, a walk-in shower, and a double vanity unit. She used Laufen, Hansgrohe and Bette to fulfill the brief.



Bathroom Contract Designer of the Year is sponsored by:



For a gallery of photos and video interviews with winners:
www.kbbreview.com/awards