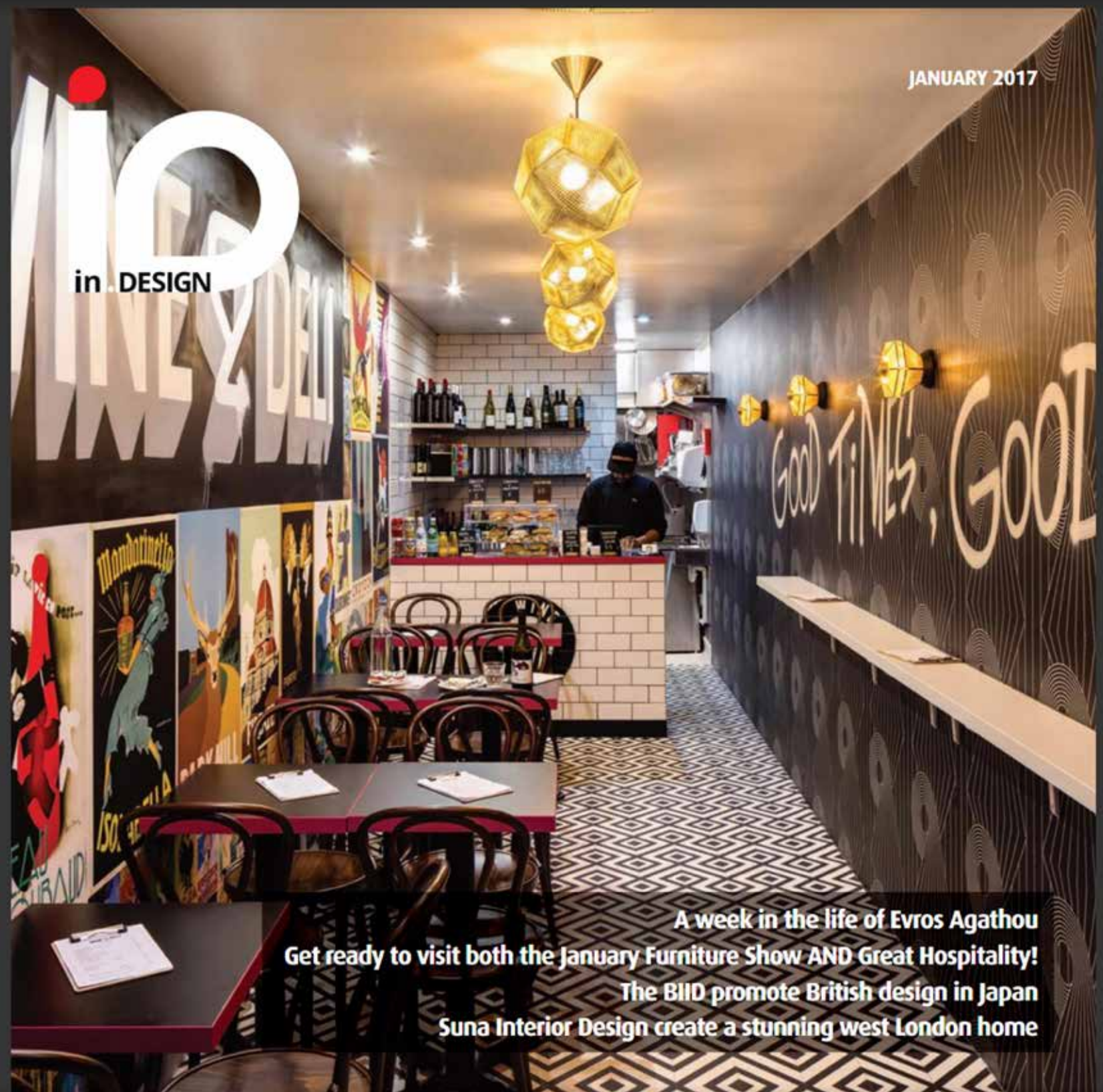


**in DESIGN**



**A week in the life of Evros Agathou  
Get ready to visit both the January Furniture Show AND Great Hospitality!  
The BIID promote British design in Japan  
Suna Interior Design create a stunning west London home**





The formal living room is a more mature space

# Coming To Fruition

Suna Interior Design is an award-winning boutique interior design consultancy who provide interior services for both property developers and the hospitality industry. Helen Fewster and Rebecca Tucker head up the London-based studio ensuring that a high level of attention is dedicated to each client and project.

**S**una Interior Design was briefed by Fruition Properties to create an exceptional design for their four bedroom show home in contemporary and charismatic Ravenscourt Park. The brief was to create an interior design that would pay homage to

this beautiful, leafy location in West London, and appeal to the potential purchasers who will most likely be young families, European or city first and second time buyers as well as those who are downsizing – all of whom though enjoy entertaining.

Thus it was important to ensure that the design be chic, trendy and make a memorable and lasting stylish impression.

“The team was inspired by the location, the lovely coffee shops, green and leafy Ravenscourt Park and the family-friendly ▼



Under and adjacent to the dining room's galleried wall are a selection of storage options



▲ atmosphere and wanted to bring this all into the design,” said Co-Director and interior designer Rebecca Tucker.

The palettes in this design dictate the mood and usage of the space. So for the often-used family room the colour palette comprises mustard and chrome with accents of greys, black and white. “Suna Interior Design wanted to create an impressive impact with the design and using a dramatic palette is a great way to do this,” Rebecca added.

On the ground floor the front entrance opens onto the big and inviting family living room which leads to the dining room and then the kitchen.

“As the rooms are essentially staggered it was vital to create a striking backdrop for the space,” explained Rebecca. “To do this we selected the eye-catching, large-scale brushed geometric print wallpaper in ivory and mustard from Harlequin. We ensured that each room has its own feel that also complements the others, by creating a visual differentiation between each.”

The family living room introduces the salient palette with two bespoke mustard punch-button tub chairs sit in front of the window. Rebecca selected the nest tables (between the tub chairs) and coffee table from French Connection because of their intriguing look – mottled glass with black metal – and opted for the grey rug with a subtle stripe which brings the room together. The bespoke ‘L’ shaped sofa with a velvet finish in a champagne colour sits opposite, defining the seating area.

Two large statement, black framed mirrors overlook the dining room which features ▼



Abstract floral artworks hang in the stairwell



The striking, large-scale, brushed geometric print wallpaper in the family living room in an ivory and mustard palette

▲ a clean black and white palette with touches of mustard in the table napkins. The bespoke white dining chairs with black piping detail sit at the elegant white lacquer table. The table setting is chic and sophisticated in its design. Behind the dining room sits a breakfast bar creating a division between the dining room and kitchen.

“Elegant black stools ensure that talking, drinking and eating can also take place in a less informal environ,” said Rebecca. “It was very important to create a design that was both aesthetically pleasing and functional at

the same time. Storage falls into this genre – a home is lived in and needs somewhere for treasured items to belong. So we’ve incorporated various forms into this design, such as the closed cabinetry below the gallery of family portraits in the dining room and the open display unit in the kitchen, for the beautiful collections you love and want to display.”

Heading upstairs, past the original abstract floral artworks, commissioned for this project from artist Steve Humble, on the first floor, is the formal living room. This is

a more mature space and features a softer, more muted palette which is neutral, clean, elegant and sophisticated. Each piece in this refined room, from the bespoke sofas to the dark wood coffee table with a white faux-leather finish has been thoughtfully selected. A large brushed chrome, round mirror overlooks this refined room. Further enhancing the ambiance is a cultured corner for cocktails or a whisky, a pair of contemporary Camerich chairs sit on either side of the stylish cabinet in the corner of this room.





▲ The mustard and chrome palette again features in the guest bedroom/study, creating a vibrant and exciting space. (The 60's inspired design of interlocking rectangles wallpaper from Harlequin creates a geometric impression and focal point in this room.) Drawing your eye towards the bed and hanging above it is the prominent, rounded metallic spiked mirror. The bed itself features a low and long bespoke black panelled headboard and is dressed with a selection of black, white and mustard cushions and throws. Two stylish Snoopy lights from Conran sit on either bedside table, with their marble bases and black enamel 'lids'.

The slim-line black metal, industrial desk and dark-wood shelving create the study element. To give the study a quirky touch items such as the moustache jars and solitaire game accessorise the space. Above the desk hangs a British Isles word map, an amusing artwork which is made from the names of each of the locations it covers.

"In the teenager's bedroom we wanted to incorporate a sense of both fun and style," said Rebecca, "so we selected the playful, slightly stormy Nuvolette wallpaper from Fornasetti and trendy, modern items of furniture. The palette continues the mustard, chrome, greys, black and white theme. The punchy mustard on the bed creates an impact in the room while the greys and blacks add a layer of sophistication and the white cabinetry and bespoke white lacquer headboard enhance the sense of space.

"The fun Anglepoise bedside lights from French Connection feature a marble base and chrome touches. The chrome is repeated in the studded mirror. Completing the look is the Hans Wegner style shell chair



The impressive master bedroom is stylish, sophisticated and luxurious



The engaging guest bedroom is dramatic and impressive

in black and walnut and the feature pendant light."

Opposite is the child's bedroom. "Here we selected a palette of soft blues and yellows, representing the playful sunlight and blue skies that stream through the

windows," Rebecca said. "This room is filled with fun, from the build-your-own bulldog head hanging between the beds, to the bright yellow contemporary bedside lamps, the bespoke BFG throws and Roald Dahl cushions on the bed. Added to this are the Eames style chairs and table and the





This bedroom is fun and has a playful nod to Roald Dahl's ingenious characters

▲ Eames style rocker with a faux fur throw. An amusing and creative space for any child."

On the top floor is the master bedroom, which is luxy and comforting. The palette reflects this and the adult haven that it is through the warm greys and taupe used, which create an impact and enhance the views of London. The feature wall behind the bed has a diamond pattern in silver and taupe, onto which sits the bespoke floor to ceiling panelled headboard.

"To enhance the opulent feel in the room we selected a combination of textures, for example the quilted throw with matching cushions on the bed together with a faux-fur throw to create layers of luxury," explained

Rebecca. "At the foot of the bed is a bespoke punch-button bench that completes the bed detail. The contemporary black glass and polished steel table and chair inform the dressing area."

An additional point of interest in this room is the gallery of black and white images hanging opposite the bed.

"This was a great project that we really enjoyed working on and bringing to life," stated Rebecca. "For example on the ground floor we wanted to ensure that there was a layered effect to the design in order to give each room its own space, but so that the entire area worked together too. The client enabled us to be bold in our decisions and the result is an interior design that pays

homage to this beautiful, leafy location in West London.

"This ideal entertainment home is chic, trendy, creates a very stylish impression and is a design that the client loves and fits the brief. If we're talking specifics, then we'd have to say the slim-line black metal, industrial desk in the study is one of our favourite items. It's retro and industrial and adds an edge to the room. I also really love the Nuvolette wallpaper from Fornasetti in the teenager's bedroom, it's both calm and dramatic! If we had to pick a favourite room though, we'd have to select the family room, it's really impactful and sets the tone for the interior design in this fabulous home."

[www.sunainteriordesign.com](http://www.sunainteriordesign.com)