

# Trying to Balance the Madness

"It's not what the world holds for you. It's what you bring to it." — Anne of Green Gables: the Sequel, written by Kevin Sullivan

## Fifty Shades of White By Suna Interior Design

Andrea Morgan / 13 hours ago



I have featured [Suna Interior Design](#) several times on my blog. I love how they use colour in their design for real effect, but their latest work is virtually colour free. Their clever use of shades of white creates a space that is warm and inviting. I love the wall paper on the ceiling in the bedroom it has a real dramatic look that adds to the exquisite look of the room.

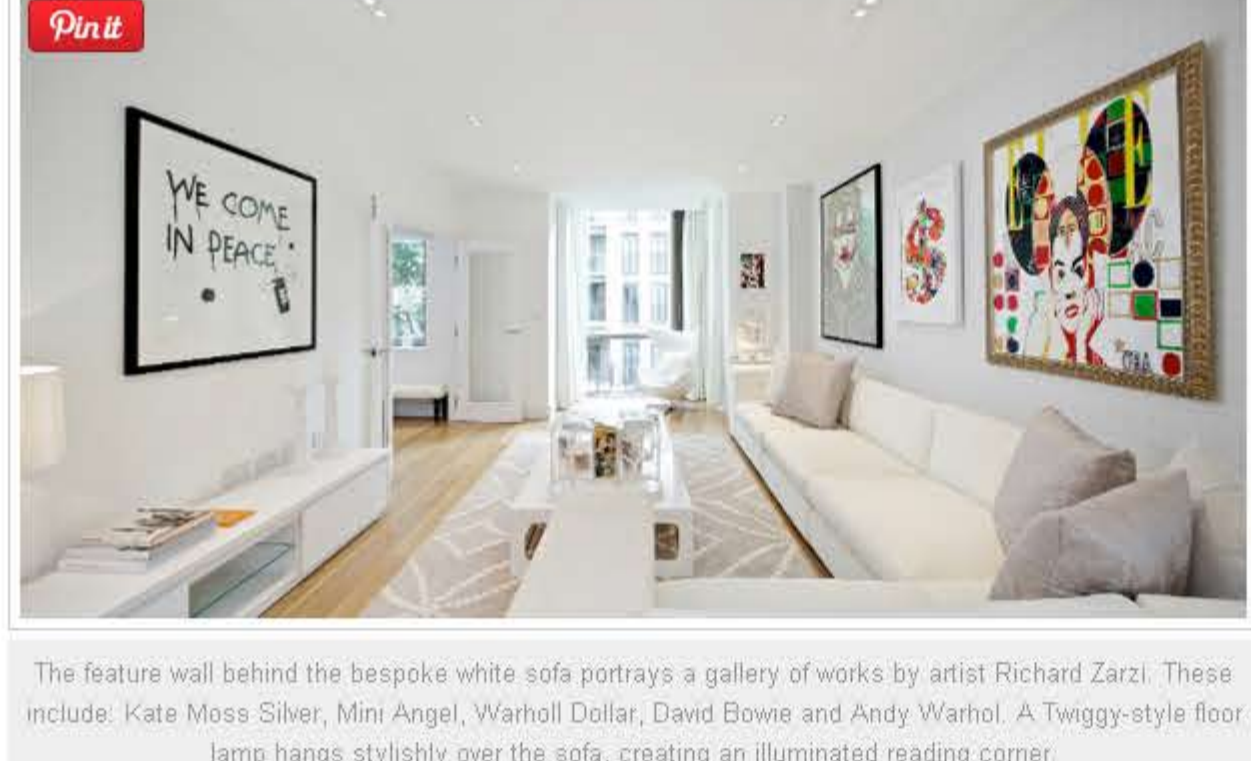
So let me open the door to **Fifty Shades of White**.

The white-on-white interior design of this townhouse layers abundant shades of white, using texture and nuances of tone. This captivating, alabaster design is home to a contemporary selection of white items of furniture that were to create the perfect 'gallery space' to display eclectic works of art, supplied by a local gallery. Unique works of art adorn the walls, bringing bright punches of colour and intrigue to the rooms while alluring white pieces of furniture, such as the egg chair and Twiggy-style lamp in the living room add a subtle glamour.



White-on-white dining room design with Richard Zarzi's Andy Warhol 'Consumers' on the wall and an eye-catching chandelier hanging over the stylish white table.

Suna Interior Design's co-director and interior designer, Rebecca Tucker created this bespoke design for Catalyst By Design's townhouse in their new development, Portobello Square in Portobello. "We wanted to design something unique, involving the local community. A talking point, something that hasn't been done before" said Rebecca "and so this design was born, unique in that it revolves around the colour white. This white design then forms the backdrop for the select works of art that hang on the walls. The artwork brings colour to the design in a unique way" said Rebecca. "It's very important that the design is strong enough on its own. The fantastic works of art are the piece de resistance, adding colour and making the design completely unique. The wooden floor that runs from the stairs up through the house also breaks up the white-on-white backdrop. In the living room we used a dusty grey and off-white rug to ensure that the room has more of a softer feel to it."



The feature wall behind the bespoke white sofa portrays a gallery of works by artist Richard Zarzi. These include: Kate Moss Silver, Mini Angel, Warhol Dollar, David Bowie and Andy Warhol. A Twiggy-style floor lamp hangs stylishly over the sofa, creating an illuminated reading corner.

This luxurious townhouse is unique in that it is simultaneously a successful show home and a pop-up gallery. The artwork has all been supplied by local, London Westbank Gallery, situated in Westbourne Grove. Each work of art has been specifically selected to hang in its own space. "It was important that the townhouse should feel like a home, not just a gallery" said Rebecca. "To this end we worked with the gallery to select the best works of art in order to create the best design possible. It was important to get the right combination between show home and pop-up gallery. This is partly why we went for the white-on-white colour palette – to better show off the artwork, while still enabling ourselves to design a luxurious interior design, befitting of this home."

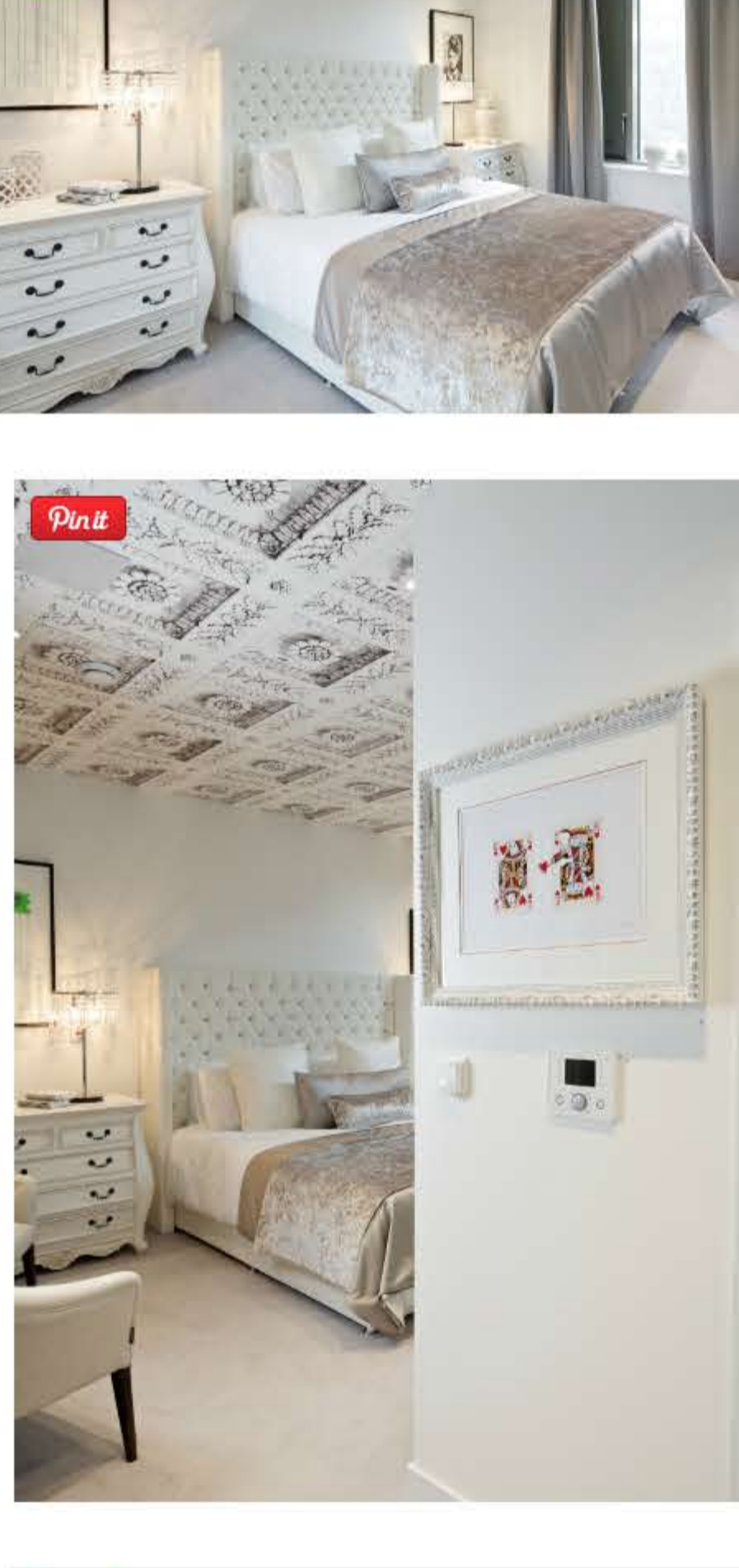


The study is filled with quirky and interesting items that continue the white theme. The artwork hanging over the desk is the desk's inverse Portrait. A Pantone-style chair sits at the desk. Bespoke shelving provides the backdrop, forming a gallery of books and stylish accessories.

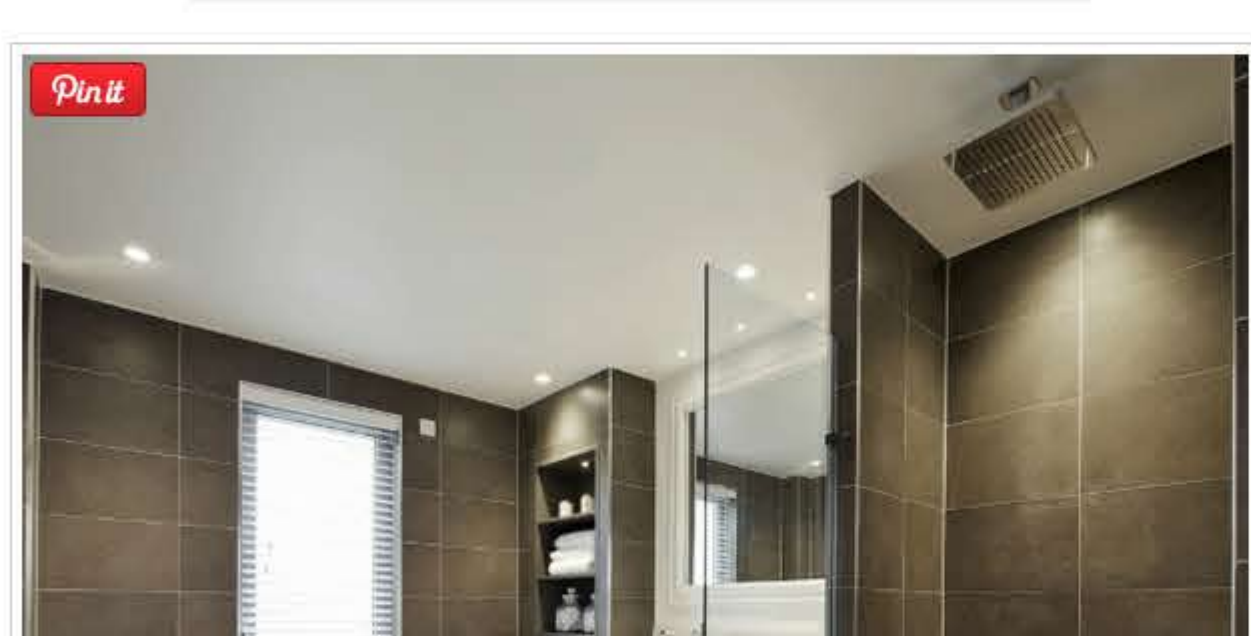
"We've created a confident, statement scheme – a talking point. We're absolutely thrilled with the result" said Rebecca. "Fifty shades of white – a rousing and exciting design, eclectic, contemporary design at its finest."



Soft off-whites furnish this bedroom, with an interesting four panel hand-carved wooden screen forming the headboard. Hanging on the wall adjacent to the bed is artist Milo's sticker collage of Love.



This bedroom features Tektura's 'Stevens' wallpaper lining the ceiling, the large bed has a bespoke, punch-button, white headboard and adorning either side of the bed are works of art by Mydogsgigh's 'Green Eyes' on the left hand side and Tim Fowler's 'Audrey Hepburn' artworks on the right hand side.



The spacious ensuite bathroom features a stylish Conran stand-alone bath and a walk-in shower.

Discover more wonderful designs by [Suna Interior Design](#)

More from my site



Welcome to Miami – The Ice House in Hampstead



Georgian Townhouse with a Contemporary Twist and Minimalist Style



Review: Dux: Ultra White Event – Guest Post by @Jobehawi



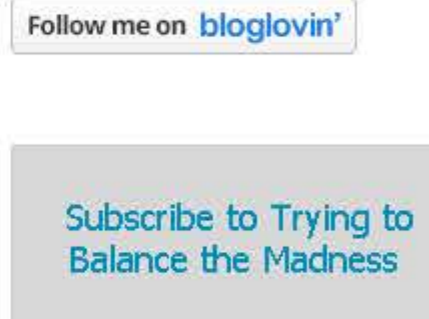
Textured, Unique and Quirky Design, Results in Gold for my friends at @SunaInteriorDes



The Penthouse Collection at The Filaments By Suna Interior Design



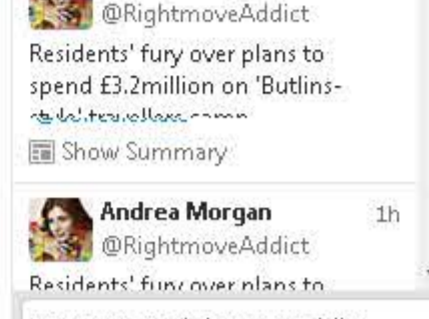
White Luxury in Mykonos



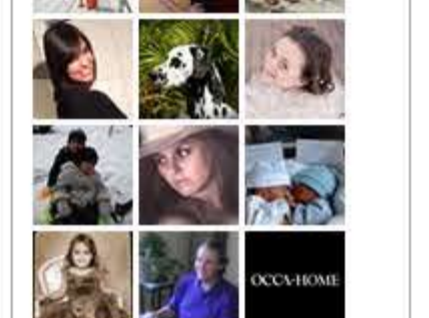
Follow me on [bloglovin'](#)

Subscribe to Trying to Balance the Madness

Name:   
Email:   
  
We respect your [email privacy](#)



Follow me on [Pinterest](#)



Search ...

