

KITCHENS BEDROOMS BATHROOMS

DECEMBER 2016

£3.25

All that glitters

Glamorous metallics
to brighten up the
dark winter nights

Bedrooms

How to find the
perfect bed for you

SEE MORE OF
THIS HOME
PAGE 124

Kitchens

Heating solutions
for open-plan
spaces

Decorating

Paint colours for
the new season

WIN!

Prizes for your
home worth
£6500

10 beautiful ideas
for bathroom lighting





Come to fruition

A thoughtful renovation of a former Buddhist centre was a fortuitous find for one lucky house hunter

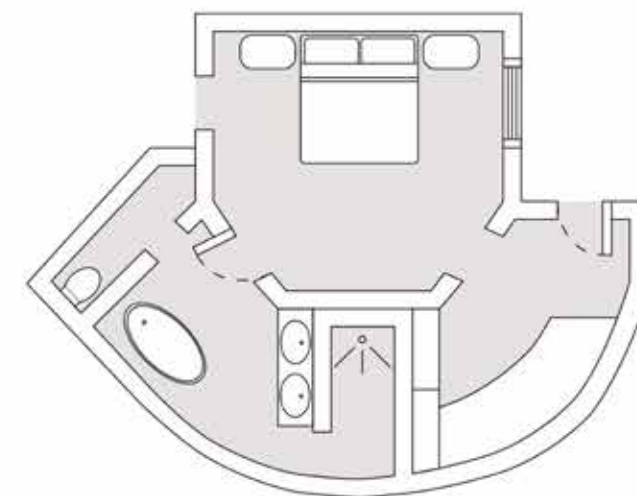
Words: Ysanne Brooks

Property programmes are choc-a-block with people trying to find homes they can put their stamp on, but what happens if you don't want the hassle of being involved in the decision-making process and are after something that's all done and beautifully dusted and ready to move into? This was the quandary that faced Mark Petrie, a busy media director at an advertising firm, when he started to look for an apartment he could comfortably live in and where he could also entertain clients and friends.

Luckily, fortune smiled on him and a visit to a friend in Notting Hill saw him chance upon a fabulous new apartment just around the corner in this buzzing London neighbourhood, which looked almost as if it had been designed with him in mind. The two-storey apartment is spread across the basement and ground floors of a grand, curve-fronted, corner-plot property built in 1836 that had once been home to the West London Buddhist Centre and, more recently, converted into luxury living by Fruition Properties.

Now housing the flat's three bedrooms, the basement required some digging out to ensure it reflected the high ceilings and grand windows of the rest of the property. Accessed from the ground-floor hallways by a glass stairwell, all three bedrooms have a dignified, masculine feel, particularly the master. Gabriella Ramacciotti at Suna Interior Design was brought on board to help create a scheme that felt fitting in a building of this grandeur.

"The whole house has a pared-back, gentleman's club flavour, but it also feels very chic and modern with plenty of metallic touches to add a sense of luxury," she reveals. "For the master, I was particularly looking for a feature wallpaper that was both sophisticated and that had an edge to it, befitting the kind of owner we were envisaging. ▶



I allocated a large part of the budget to the wallpaper, but it was definitely worth it. I subsequently discovered the one I chose, with its distinctive geometric pattern, also features in the Groucho Club, which felt very apt," Gabriella recalls.

Elsewhere in the room, the geometrics of the wallpaper pattern are echoed by bold drop pendants either side of the bed, while the brass tones are reflected in the fittings on the bedside tables. "The overall look I wanted to achieve was of a slick, sophisticated bachelor pad. I prefer to limit the colour palette and here felt black, white, indigo and splashes of metallic were most fitting. I then added personality with artwork and carefully chosen accessories," reveals Gabriella.

The ensuite that adjoins the master bedroom proved to be quite a challenge when it came to tiling due to the curved wall. It was a feature that Monica Khuroya at Fruition Properties didn't want to lose, though, reflecting as it does the building's individuality. "We did briefly consider creating a straight stud wall, but it just wouldn't have been true to the fabric of the building," says Monica. "Tiling that wall was a challenge, but we got over it by ordering skinny, bespoke tiles that we then set vertically from top to bottom, following the curve of the wall rather than trying to fight it by tiling from side to side as you would do in a traditional bathroom."

Along with bespoke Carrara marble tiles above the freestanding composite bath, luxurious open shower and 'his and hers' basins, the room has a restful spa-like atmosphere, making it the perfect place to relax after a busy day.

It's upstairs, though, that the period opulence of the high-ceilinged rooms really shines through. Here, Gabriella has continued the 'grand tour' feel of the fixtures and fittings, dressing the huge space with bold, oversized furniture and accessories in rich, dark tones. Although effectively an open-plan room, the kitchen is positioned so as to create a compact zone for cooking and relaxed dining. "It was the obvious place to site it," says Monica. "It's clearly separated from the living and more formal dining space, yet the fact that it is only glass around the staircase that sits between the two areas means it doesn't feel cut off."

Urbo cabinetry painted in Farrow & Ball's Manor House Grey from bespoke kitchen maker Roundhouse provides yet more texture in the shape of rough-hewn stone worktops and an unusual matt black glass splashback that allows the Driftwood wall cupboards to almost pop from the wall. It's this combination of bold materials, refined decorative elements and classic architectural touches that have created a sense of harmony in the space, which speaks of both its history and its future as a welcoming home for Mark. **[KBB]**

Opening pages (p124-125): Despite being in a basement, the master bedroom has higher-than-usual ceilings, which, along with natural light from the windows and the use of light-reflecting materials, helps to mitigate its subterranean nature.

Above: The Kit Miles Fretwork wallpaper, bold bespoke upholstered headboard and metallic touches give the master bedroom a distinctly masculine feel.

Right: Interior designer Gabriella has softened the masculine edge of the master bedroom with luxurious textures such as faux fur, silk and velvets.



Q&A

Interior designer Gabriella Ramacciotti says...



Which elements took up the majority of the budget?
The furniture represents about 60% of the overall budget, and within this the gloss dining table, bespoke chairs and luxurious velvet corner sofa in the open-plan living area and the large punch button headboard and walnut glass furniture in the master bedroom were the most expensive pieces.

Were there any places you managed to save money?
Trying to save money in certain areas isn't really the way we approach the spend. It is more about distributing the budget to the best advantage in order to achieve maximum impact.

What was the biggest challenge with the project?
The challenge was to design something that provides the look of premium, high-end luxury without blowing the budget, and striking a balance between a masculine scheme that would also have feminine appeal was a key consideration.

Any tips for people embarking on a similar project?
In terms of budget, my advice would be to choose the key pieces first – sofa, dining table and chairs and master bedroom furniture – and then distribute the remaining funds evenly throughout the project.

Below: The palette of blacks, greys and metallics are also features of the guest bedroom with its bold Tom Ford-inspired feature shelf above the bed, slim herringbone-framed mirror and black-and-white prints.



Above: While the curved wall in the master ensuite was a challenge, the skinny tiles selected accentuate the feature rather than cover it up, helping the space stay true to the building in which it sits.

Left and opposite page, top: With its large walk-in shower, 'his and hers' basins and Carrara marble tiles, the ensuite exudes relaxing hotel spa style.

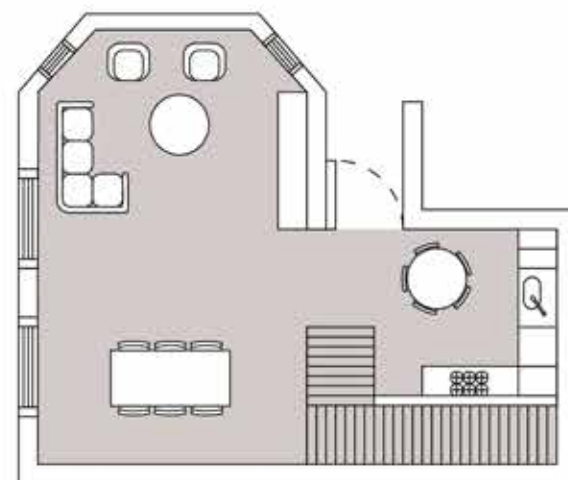




The bespoke Roundhouse kitchen beautifully mixes the rough with the smooth, pairing matt painted cabinetry and a sleek, matt glass splashback with rough-hewn Driftwood wall units and textured Antique Nero Assoluto worktops.



“The challenge was to design something that provides the look of high-end luxury without blowing the budget.”



Top right: Sitting by the window, bathed in light, the circular table not only provides a place for more relaxed dining, it's also a great place for Mark to work.

Right: Creating zones is important in a room this size and Gabriella was careful to clearly define the relaxing and entertaining spaces. The stunning wall fresco creates an Italianate backdrop to evening dining at the extendable black gloss table.



Left: With grand Italian interiors in mind, designer Gabriella knew this huge, high-ceilinged space could take big, bold pieces, creating a scheme that's a seriously contemporary take on gentleman's club style.

SourceBook

DESIGN

Architect Monica Khroya, Fruition Properties (020 3828 0116 or www.fruitionproperties.co.uk)

Interior designer Gabriella Ramacciotti, Suna Interior Design (020 8544 9350 or www.sunainteriordesign.com)

KITCHEN

Cabinetry Bespoke Urbo units in Farrow & Ball Manor House Grey and Driftwood wall cabinets, Roundhouse (020 7297 6220 or www.roundhousedesign.com)

Worktops Antique Nero Assoluto, Roundhouse, as before

Appliances Single oven, combination microwave and induction hob, all Miele (0330 160 6600 or www.miele.co.uk); Wine storage unit, Liebherr (0333 014 7888 or www.myliebherr.co.uk); Integrated fridge-freezer and dishwasher, Siemens (0844 892 8999 or www.siemens-home.co.uk); Concealed extractor, Westin (01484 421585 or www.westin.co.uk)

Sink and taps Undermounted sink, Franke (0161 436 6280 or www.franke.co.uk); Fusion boiling water and mixer tap, Quooker (0345 833 3555 or www.quooker.co.uk)

Flooring Bespoke engineered board, Fruition Properties, as before

Table and chairs Dwell (0345 675 9090 or www.dwell.co.uk)

Crockery Sue Timney Range, M&S (0333 014 8000 or www.marksandspencer.com)

LIVING ROOM

Sofa For similar try Cloud sofa in Navy Blue brushed cotton, Loaf (0845 468 0698 or www.loaf.com)

Cushions For similar try a selection at Wayfair (www.wayfair.co.uk)

Dining table Extending black gloss, Next (0333

777 8000 or www.next.co.uk)

Dining chairs For similar try the Cape Lodge dining chair, Ralph Lauren Home (020 7590 7990 or www.ralphlauren.co.uk)

Armchairs Magnum square back brown leather and steel, Alexander & Pearl (020 8508 0411 or www.alexanderandpearl.co.uk)

Vases West Elm (0800 404 9780 or www.westelm.co.uk)

Mirror For similar try the Omate Crest mirror, The Chandelier & Mirror Company (01892 541355 or www.chandeliersandmirrors.co.uk)

Rug For similar try Alma, Made (0344 257 1888 or www.made.com)

Coffee table For similar try Nest tables Joanna Wood (020 7730 5064 or www.joannawood.co.uk)

Curtains and blinds For similar try made-to-measure designs in Coconut, Natural Curtain Company (01394 775670 or www.naturalcurtaincompany.co.uk)

Decorative oars Portobello Market (020 7727 7684 or www.portobelloroad.co.uk)

Wall hanging Suna Interior Design, as before
Walls Felt 4, Paint & Paper Library (020 7823 7755 or www.paintandpaperlibrary.com)

Lamp Inspiration three-arm floorlamp from Serge Mouille, Suna Interior Design, as before

Stone lurcher Dwell, as before

Flooring Fruition Properties, as before

MASTER BEDROOM

Bed Bespoke divan. For similar try Savoir Beds (020 8838 4838 or www.savoirbeds.co.uk)

Wallpaper Fretwork in Navy by Kit Miles (www.kitmiles.co.uk)

Pendant lights Dwell, as before

Throw For similar try Natural Bed Company (0114 272 1984 or www.naturalbedcompany.co.uk)

Cushions From a selection at West Elm and

Habitat (0344 499 4686 or www.habitat.co.uk)

Bedside tables For similar try John Lewis (0345 604 9049 or www.johnlewis.com)

Mirror West Elm, as before

GUEST BEDROOM

Bed Bespoke. For similar try John Lewis, as before

Mirror West Elm, as before

Throw For similar try Star by Julien Macdonald, Debenhams (0344 800 8877 or www.debenhams.com)

Framed prints From a selection at Habitat, as before, and Dwell, as before

Bedside lamps For similar try Amari, John Lewis, as before

MASTER ENSUITE

Bath For similar try Starck freestanding oval bath, Duravit (0845 500 7787 or www.duravit.co.uk)

Bath filler For similar try Essence, Grohe (0871 200 3414 or www.grohe.co.uk)

Basins Vero, Duravit, as before

Taps Axor Starck, Hansgrohe (01372 472001 or www.hansgrohe.co.uk)

Tiling Bespoke tiles. For similar try Vella Barcelona Brick and East Hampton, Fired Earth (0113 243 0748 or www.firedearth.com)

Flooring Bespoke tiles. For similar try Reykjavik, Fired Earth, as before

Vanity unit Bespoke. For similar try Elite 100 in Walnut, Bauhaus (0345 873 8840 or www.bauhaus-bathrooms.co.uk)

Radiator For similar try Design, Bauhaus, as before

COSTS

A similar kitchen would cost around £45,000, the master bedroom about £12,000 and the master ensuite around £30,000